

N1MM LOGGER+ IN A CONTEST

IAN KAHN, NV4C



ABOUT THIS PRESENTATION

● WHAT IT IS:

- Beginner Info
- Basics on using the software

● WHAT IT ISN'T:

- How to use every advanced features

WHAT WE'LL COVER

- Pre-contest
- Installation
- Setup/configuration
- During the contest – basic operations
- After the contest – submitting the score, statistical information

ABOUT N1MM LOGGER+

● WHAT IT IS:

- Contest logger
- DXPedition Logger
- Special Event Logger

● WHAT IT ISN'T:

- General daily logger

PART I – INSTALLATION AND SETUP



INSTALLATION

- Download from <https://n1mmwp.hamdocs.com/>
- Two-part download
- Full Install file – N1MM-Logger-FullInstaller-1.0.8954.exe
- Latest Update file – N1MM-Logger-Update-<ver#>.exe
- Download both files
- Install Full Install file first
- Then install Latest Update file

INSTALLATION (CONT.)

The screenshot shows a web browser window with the URL `n1mmwp.hamdocs.com`. The page features the N1MM Logger Plus logo and a navigation menu with the following items:

- HOME
- DOWNLOADS
- DOCS
- HOT TOPICS
- HELP
- SEARCH
- WEBSITE

The navigation menu is expanded, showing the following options:

- PROGRAM FILES
 - FULL INSTALL
 - LATEST UPDATE FILES
 - LATEST UPDATE HISTORY
 - EXPERIMENTAL VERSIONS
 - ARCHIVE FILES (1/2021) – N1MM ON WINDOWSXP
 - ARCHIVE FILES (8/2014) – N1MM CLASSIC
- CATEGORY LISTING
- CATEGORY MENU...
- MOST POPULAR

The main content area contains the text: "logging program. For CW, phone and digital modes, its".

At the bottom of the browser window, there is a taskbar with the following open applications:

- skitchsetup_2.3.2.1....exe
- N1MMLoggerPlus....jpg

A small window titled "help" is also visible, showing a table with the following data:

Rcv	Pwr
W1AW	59
59	1000

INSTALLATION (CONT.)

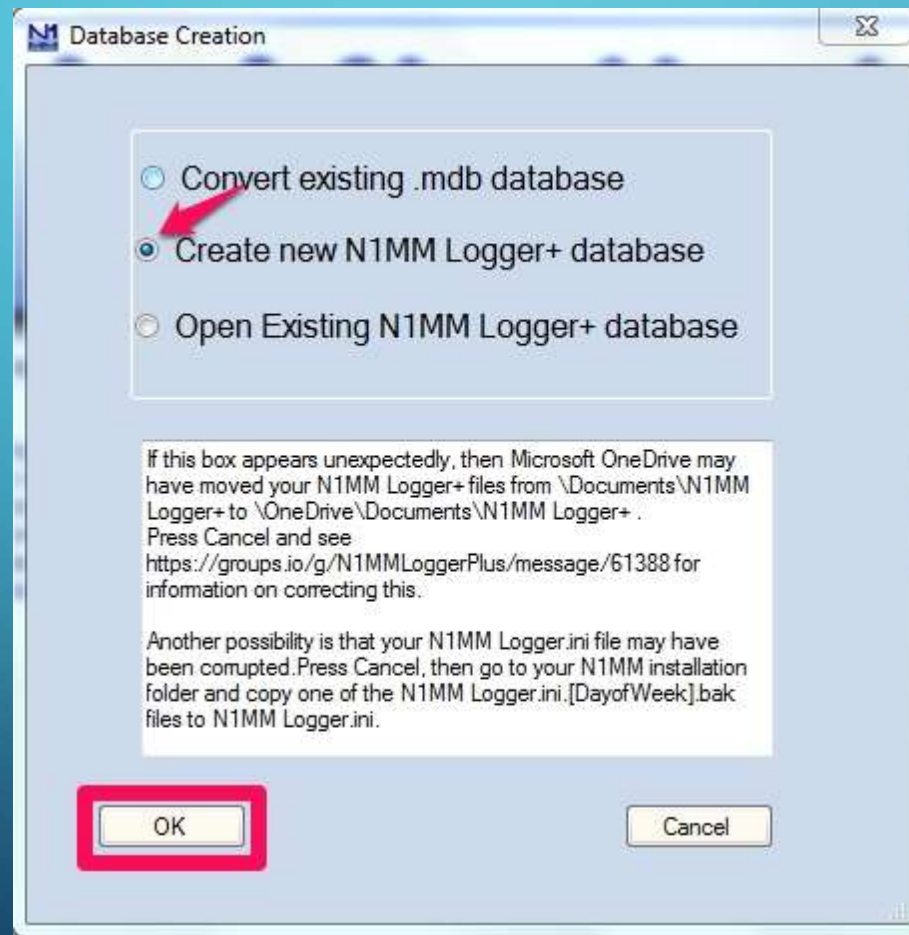
- Double-click Full Installer to launch
- Allow N1MM Logger+ to make changes to system
- Accept the defaults
- Click “OK” to install
- Reboot when prompted
- Once done, double-click update installer to launch
- Follow same steps as with Full Installer
- Once complete, N1MM Logger+ will launch

INSTALLATION (CONT.)

- Program installed to C:\Program Files (x86)\N1MM Logger+
- Important files also installed to
C:\Users\<<your_user_name>\Documents\N1MM Logger+

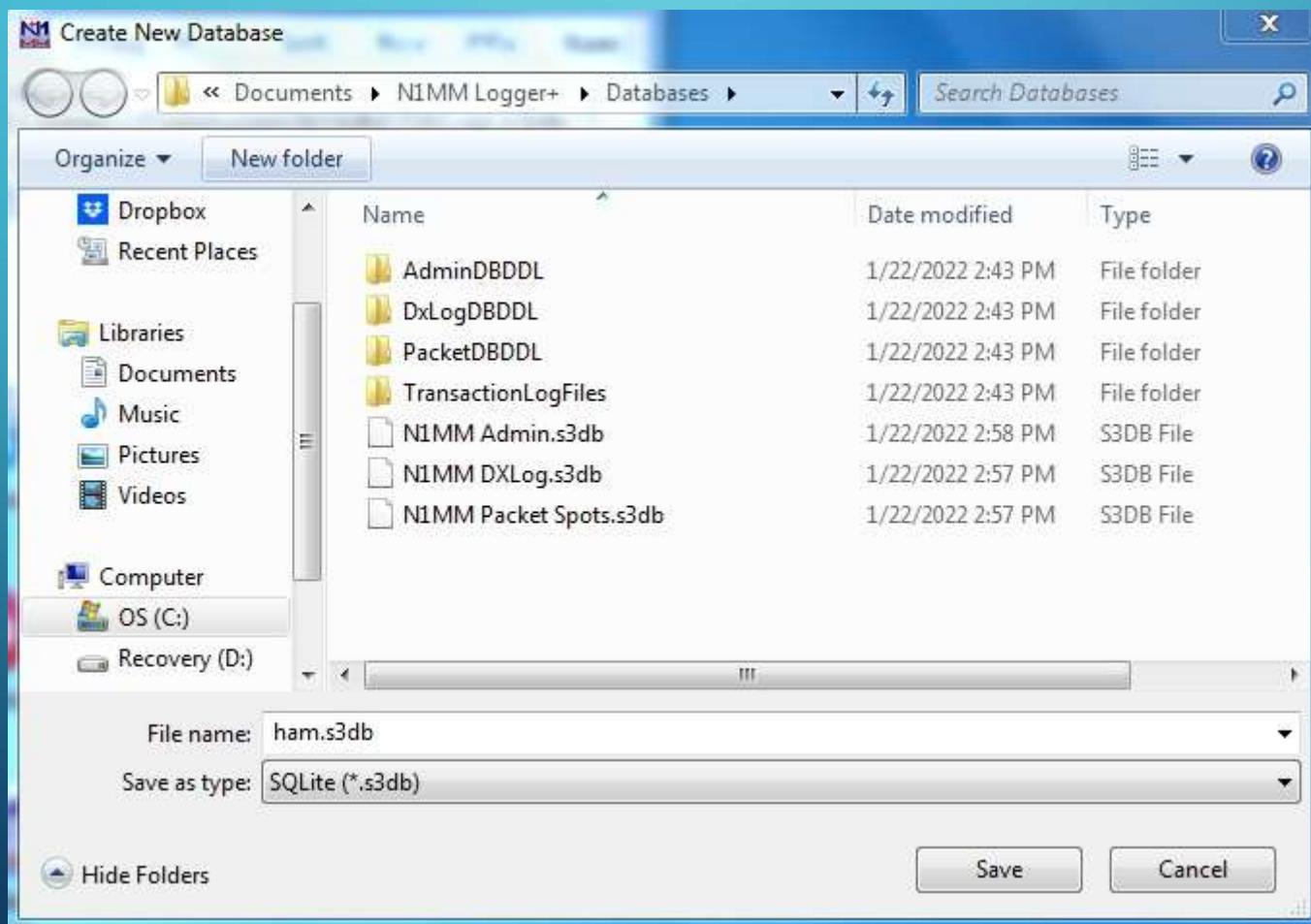
SETUP AND CONFIGURATION

Create new database



SETUP AND CONFIGURATION (CONT.)

Default database setup



SETUP AND CONFIGURATION (CONT.)

Station information

Edit Station Information

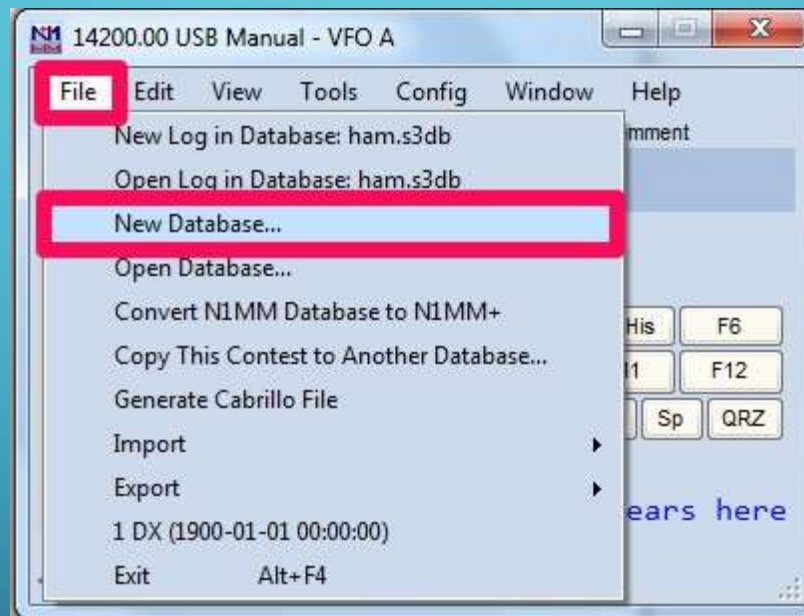
Tip: You need to fill out this form or the program will not perform properly... Also, make sure your computer date and time are set to the LOCAL date and time zone for your location.

Call	NV4C								
Name	Ian Kahn								
Address	1905 Six Branches Drive								
Address									
City	Roswell	State	GA	Zip	30076				
Country	USA								
Grid Square	EM74UA	CQ Zone	5	ITU Zone	8				
License	Extra	Latitude	34.0208		N	Longitude	84.2917		W
Station TX/RX		Power							
Antenna		Ant. Height		a.s.l.					
ARRL Section	GA								
Rover QTH									
Club	North Fulton ARL								
Email address	NoEmailProvided								

Ok Help Cancel

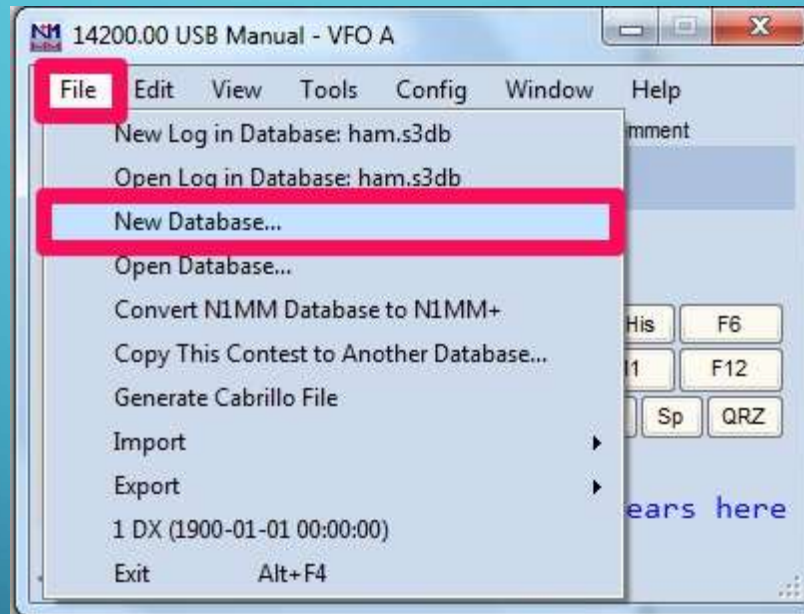
SETUP AND CONFIGURATION (CONT.)

Create Your Own Database



SETUP AND CONFIGURATION (CONT.)

Create Your Own Database (cont.)



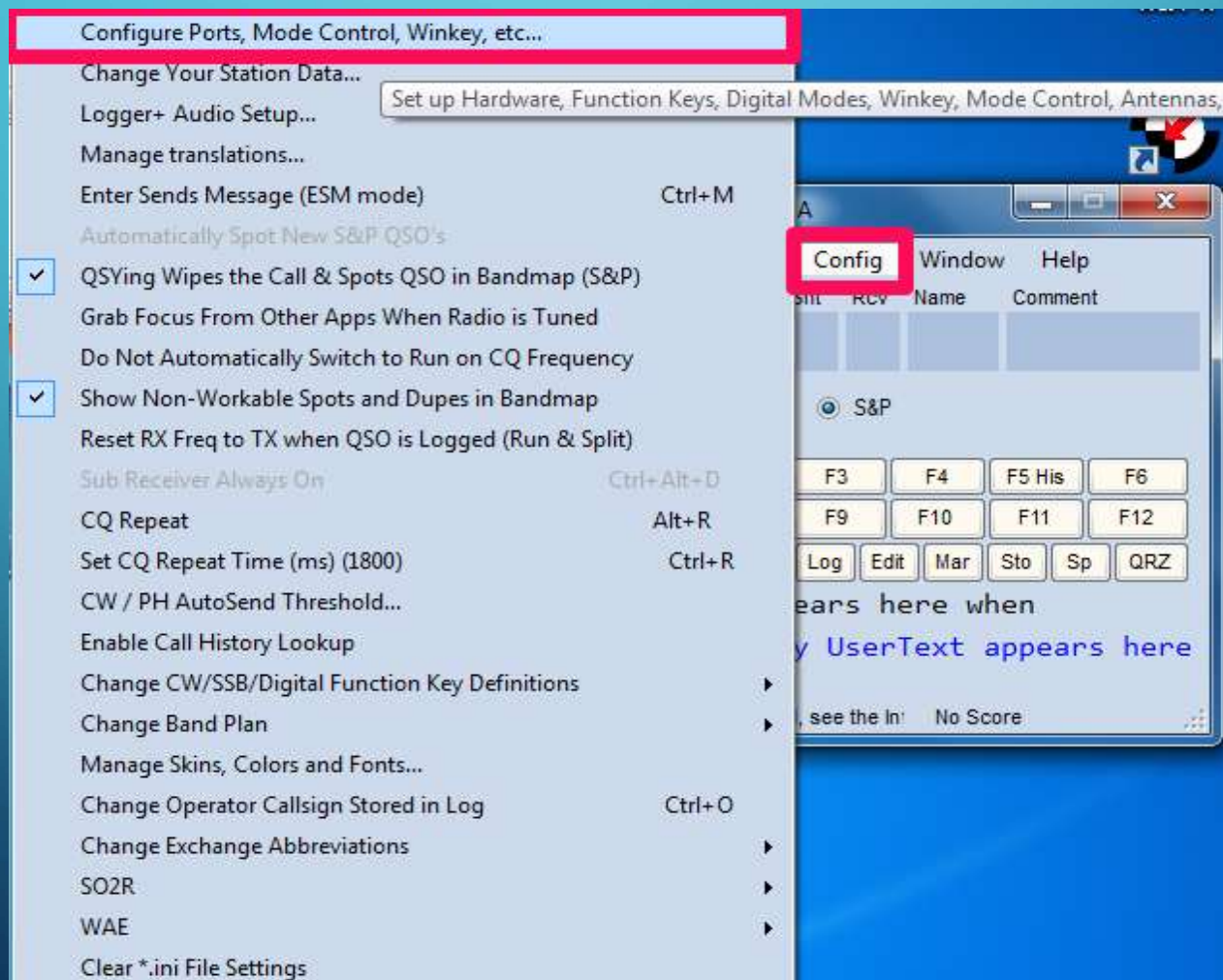
SETUP AND CONFIGURATION (CONT.)

Create Your Own Database (cont.)



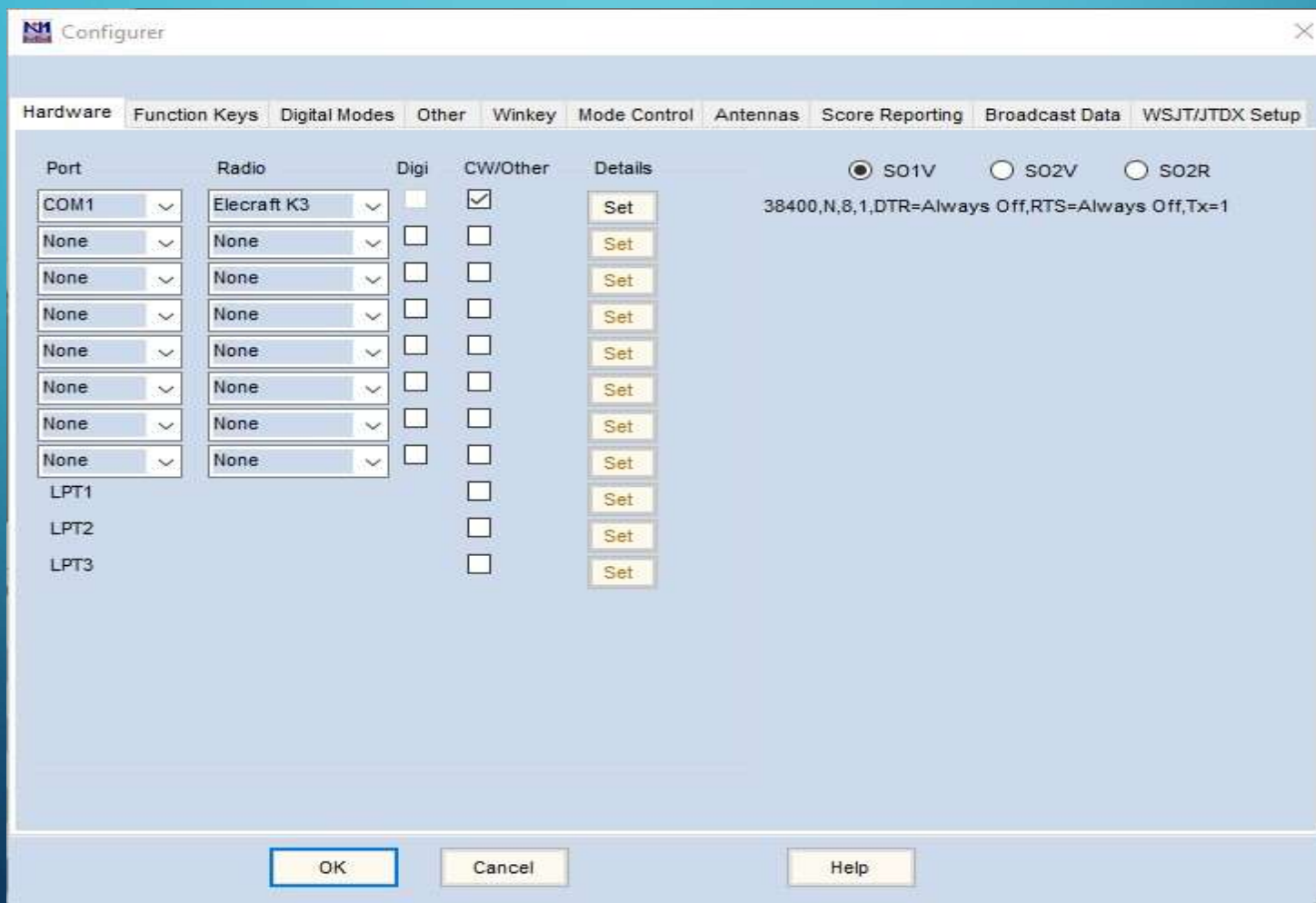
SETUP AND CONFIGURATION (CONT.)

- Set up rig control



SETUP AND CONFIGURATION (CONT.)

- Set up rig control (cont.)



SETUP AND CONFIGURATION (CONT.)

- Set up rig control (cont.)

Com1

Speed	Parity	DataBits	Stop Bits
38400	N	8	1

DTR (pin 4)	RTS (pin 7)	Radio Nr
Always Off	Always Off	1

PTT Delay (msec)
30

Enable Both Hardware & Software PTT
 PTT via Radio Command SSB Mode
 PTT via Radio Command CW Mode
 Allow ext interrupts
 PTT via Radio Command Digital Mode

Two Radio Protocol	FootSwitch (pin 6)
None	None

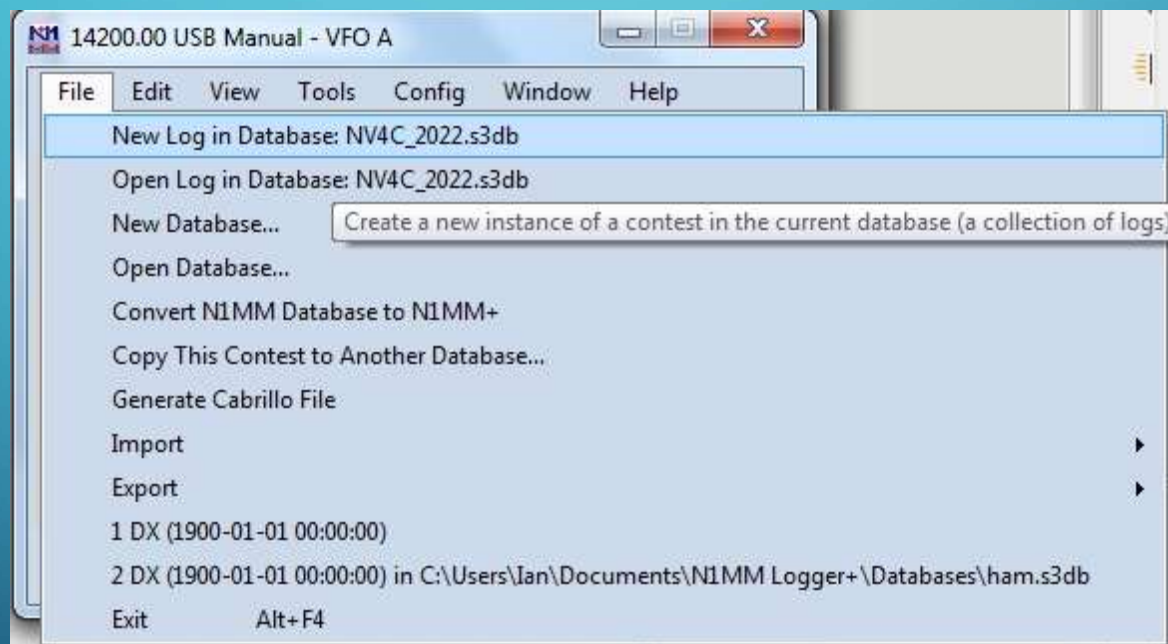
Radio Polling Rate
Normal

Suggested Elecraft K3 Settings:
19200 - 38400, N, 8, 1, Always Off, Always Off

Help OK Cancel

SETUP AND CONFIGURATION (CONT.)

- Create Contest Log in Database



SETUP AND CONFIGURATION (CONT.)

- Create Contest Log in Database (cont.)

NV4C_2022.s3db

Select Contest Type for New Log

Log Type: QSOPARTY | QSO Parties (US and Canada) [v]

Start Date: 2022-01-29 13:00:00

Total number of contacts in database: 0

Contest | Associated Files

Category [Show Setup] [Show Rules]

Operator: SINGLE-OP [v]

Band: ALL [v]

Power: HIGH [v]

Mode: SSB+CW [v]

Overlay: N/A [v]

Station: FIXED [v]

Assisted: ASSISTED [v] | Time Category: N/A [v]

Transmitter: ONE [v]

Sent Exchange: GA [v] | Omit RST. E.g. CQWW: 05 [v]

Operators: NV4C

Soapbox

State for Log Type QSOPARTY

7QP [v]

7QP
AK
AL
AR
AZ
BC
CA
CO
CP
DE
FL
GA
IA
ID
IL
IN

[v] in List
[v] List

SETUP AND CONFIGURATION (CONT.)

- Create Contest Log in Database (cont.)

NV4C_2022.s3db

Select Contest Type for New Log

Log Type: QSOPARTY | QSO Parties (US and Canada)

Start Date: 2022-01-29 18:00:00

Total number of contacts in database: 0

Contest

Category

Operator: SINGLE-OP State for Log Type QSOPARTY: GA

Band: ALL Note - the program does not validate categories. Check the contest rules for valid categories.

Power: HIGH

Mode: SSB

Overlay: N/A

Station: FIXED

Assisted: NON-ASSISTED Time Category: N/A

Transmitter: ONE

Sent Exchange: FULT Omit RST. E.g. CQWW: 05 SS: A 56 EMA

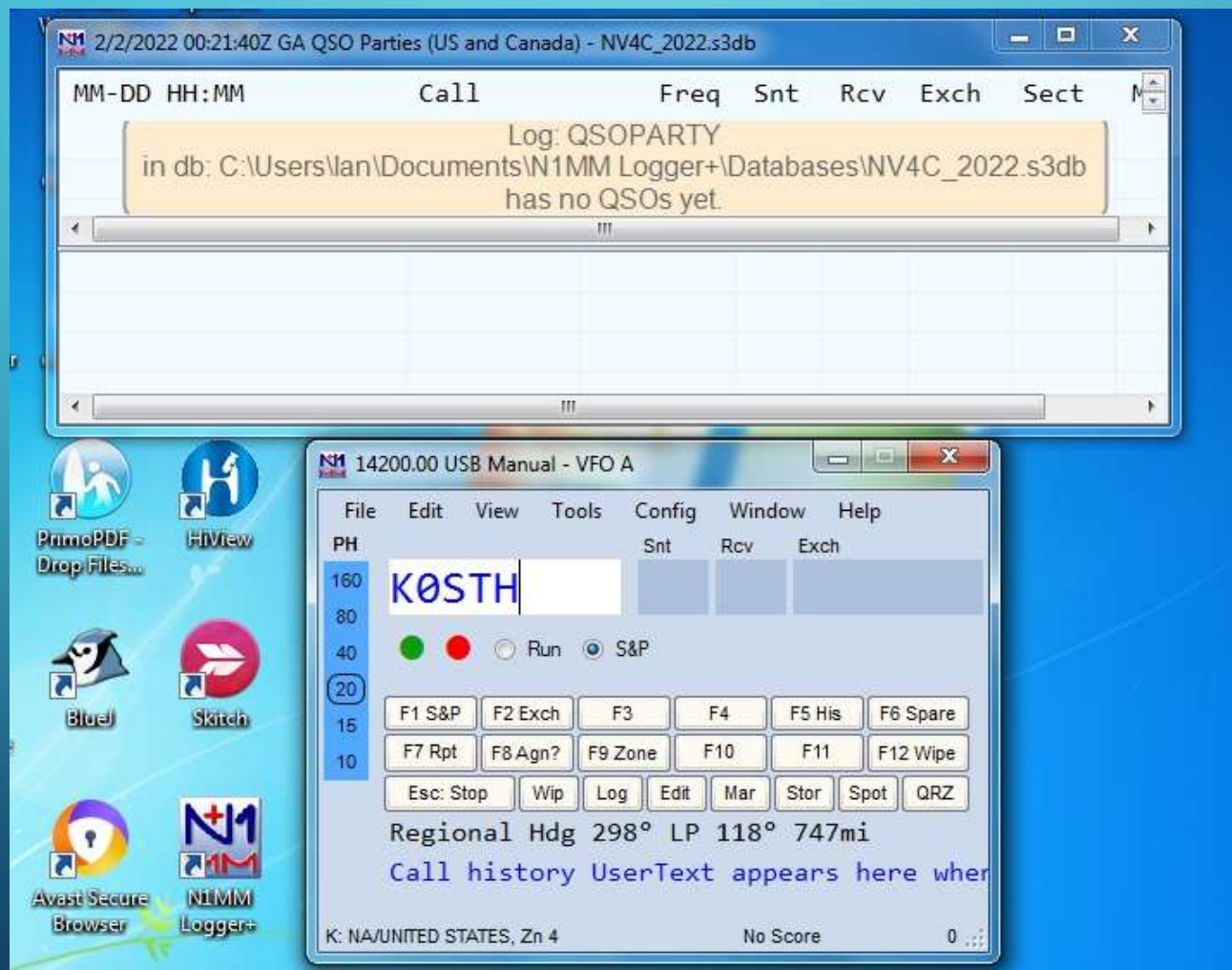
Operators: NV4C

Soapbox:

PART II – DURING THE CONTEST



DURING THE CONTEST – DEFAULT SCREEN LAYOUT



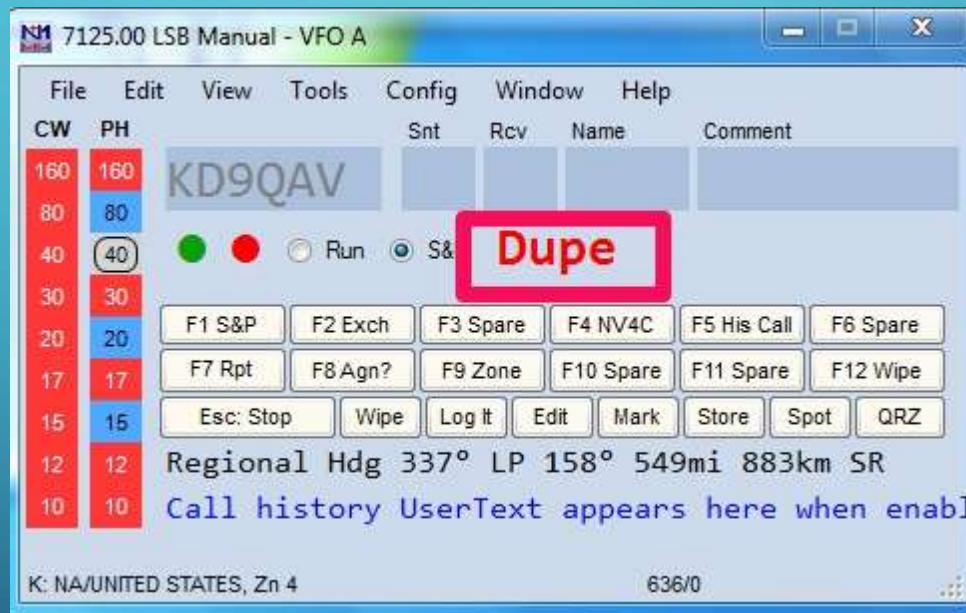
DURING THE CONTEST – MAKE CONTACTS

- Choose Run or S&P as appropriate
- Space bar to move between fields
- Enter key to log contact



DURING THE CONTEST – MAKE CONTACTS

- What if I worked you before?






DURING THE CONTEST – THE LOGGED CONTACT

The screenshot shows a window titled "2/5/2022 19:05:00Z GA QSO Parties (US and Canada) - NV4C_2022.s3db". The window contains a table with the following columns: MM-DD HH:MM, Call, Freq, Snt, Rcv, Exch, Sect, M1, and Pts. There is one data row with the following values: 02-05 19:02, K0STH, 14200.00, 59, 59, MO, MO, a red checkmark, and 1.

MM-DD HH:MM	Call	Freq	Snt	Rcv	Exch	Sect	M1	Pts
02-05 19:02	K0STH	14200.00	59	59	MO	MO	✓	1

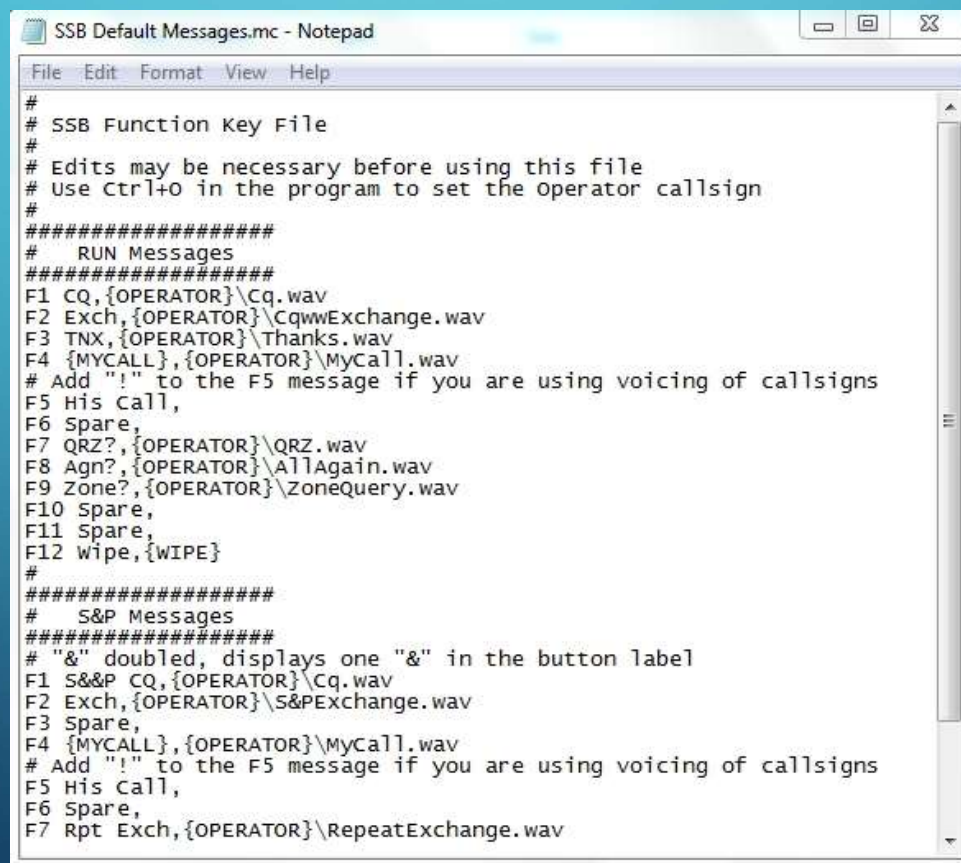
DURING THE CONTEST – MAKE CONTACTS

- Automatic keying - C:\Users\\Documents\N1MM Logger+\FunctionKeyMessages
- Voice
- CW
- Digital

Name	Date modified	Type	Size
 CW Default Messages.mc	1/22/2022 2:43 PM	MC File	2 KB
 Digi Default Messages.mc	1/22/2022 2:43 PM	MC File	2 KB
 SSB Default Messages.mc	1/22/2022 2:43 PM	MC File	2 KB

DURING THE CONTEST – MAKE CONTACTS

- Automatic keying – Sample Macro File



```
SSB Default Messages.mc - Notepad
File Edit Format View Help
#
# SSB Function Key File
#
# Edits may be necessary before using this file
# Use Ctrl+O in the program to set the Operator callsign
#
#####
# RUN Messages
#####
F1 CQ,{OPERATOR}\Cq.wav
F2 Exch,{OPERATOR}\CqwwExchange.wav
F3 TNX,{OPERATOR}\Thanks.wav
F4 {MYCALL},{OPERATOR}\MyCall.wav
# Add "!" to the F5 message if you are using voicing of callsigns
F5 His Call,
F6 Spare,
F7 QRZ?,{OPERATOR}\QRZ.wav
F8 Agn?,{OPERATOR}\AllAgain.wav
F9 Zone?,{OPERATOR}\ZoneQuery.wav
F10 Spare,
F11 Spare,
F12 wipe,{WIPE}
#
#####
# S&P Messages
#####
# "&" doubled, displays one "&" in the button label
F1 S&&P CQ,{OPERATOR}\Cq.wav
F2 Exch,{OPERATOR}\S&PExchange.wav
F3 Spare,
F4 {MYCALL},{OPERATOR}\MyCall.wav
# Add "!" to the F5 message if you are using voicing of callsigns
F5 His Call,
F6 Spare,
F7 Rpt Exch,{OPERATOR}\RepeatExchange.wav
```

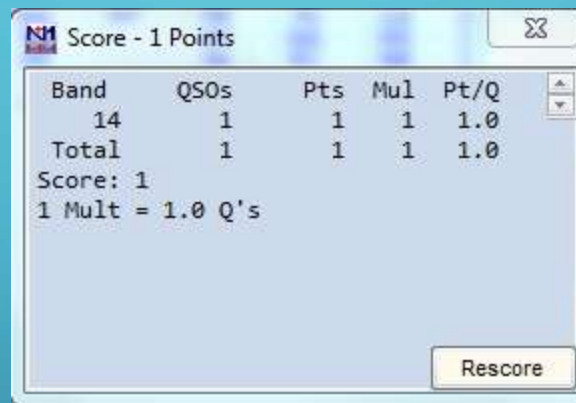
DURING THE CONTEST – OTHER USEFUL WINDOWS

- Gray Line (Window -> Gray Line):



DURING THE CONTEST – OTHER USEFUL WINDOWS

- Score Summary (Window -> Score Summary):



Band	QSOs	Pts	Mult	Pt/Q
14	1	1	1	1.0
Total	1	1	1	1.0

Score: 1
1 Mult = 1.0 Q's

Rescore

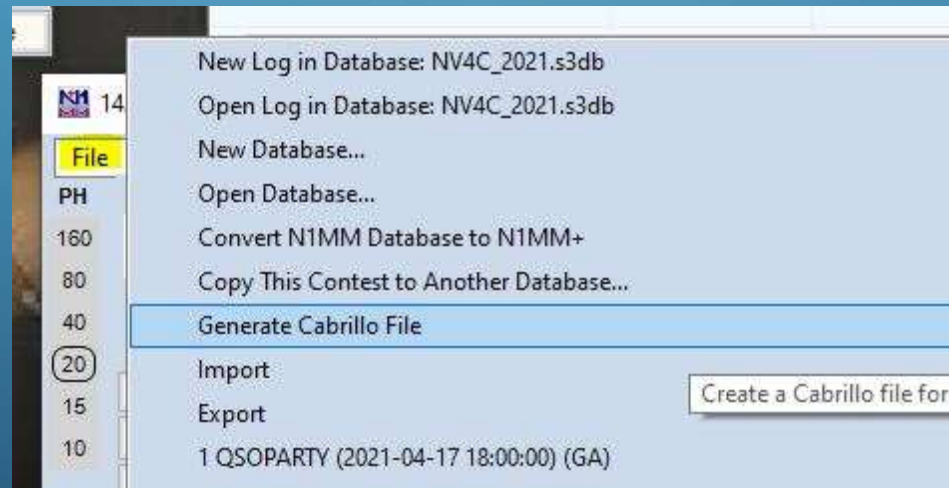
PART III – AFTER THE CONTEST



SUBMIT THE LOG

EXPORT THE CABRILLO FILE

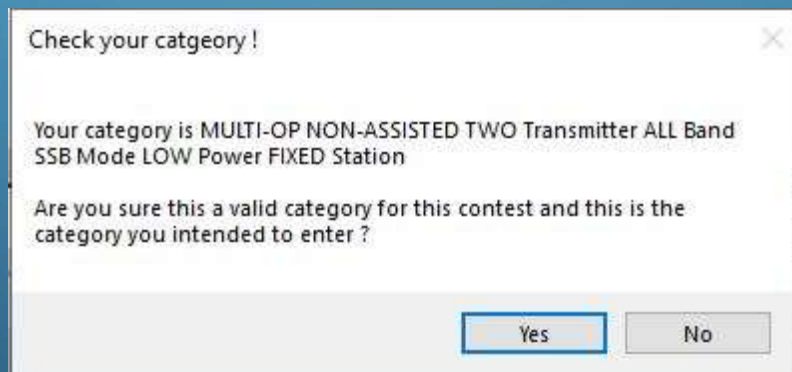
File -> Generate Cabrillo File



SUBMIT THE LOG

EXPORT THE CABRILLO FILE

Confirm the category



SUBMIT THE LOG

EXPORT THE CABRILLO FILE

Confirm the exchange

Check your sent exchange!



Your Cabrillo log will be generated using the following SENT EXCHANGE:

GILM

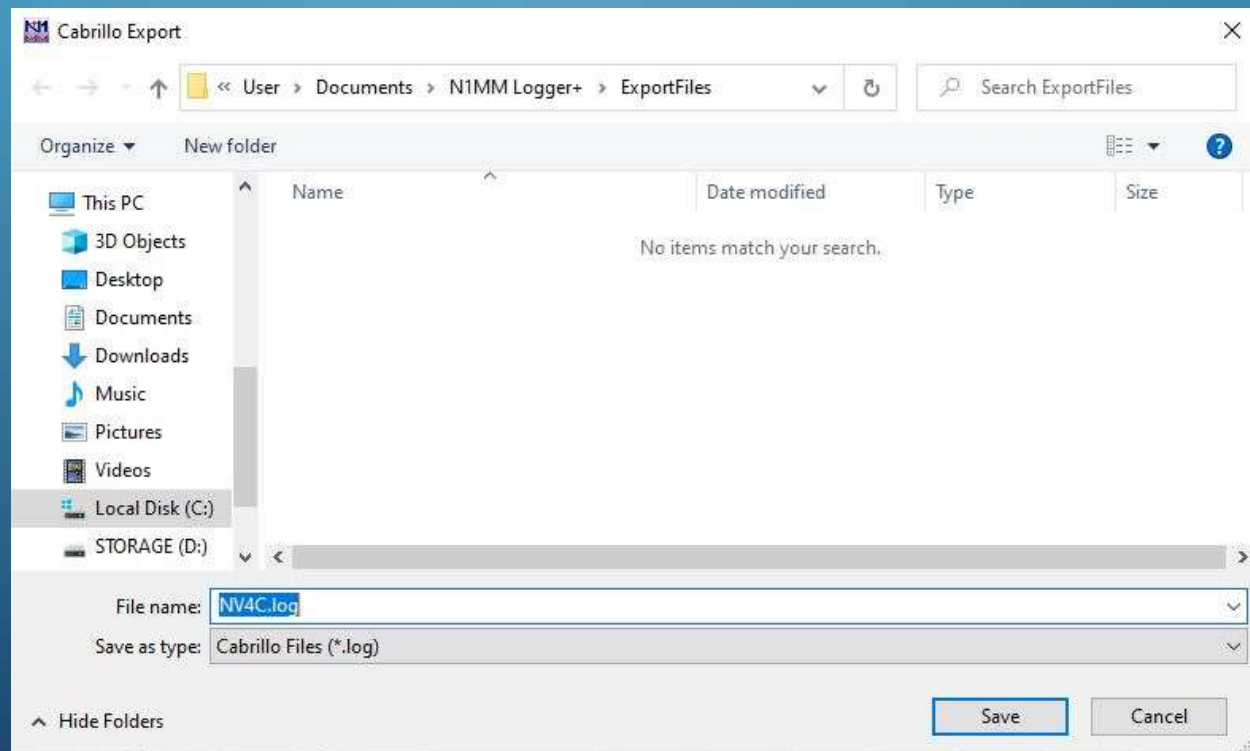
RST will be added if needed for this contest. Place a 001 in the correct position if serial number is required for this contest (EXCEPT ARRL SS!). If the sent exchange is not correct, use File, Open Log in Database and correct it!

OK

SUBMIT THE LOG

EXPORT THE CABRILLO FILE

Pick the folder to save the log file

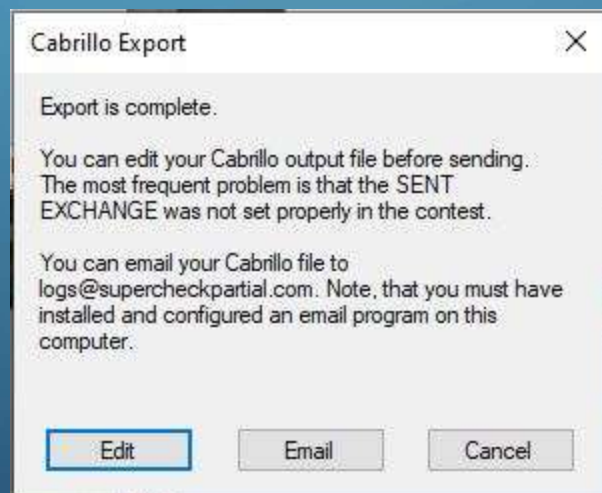


EXPORT THE CABRILLO FILE

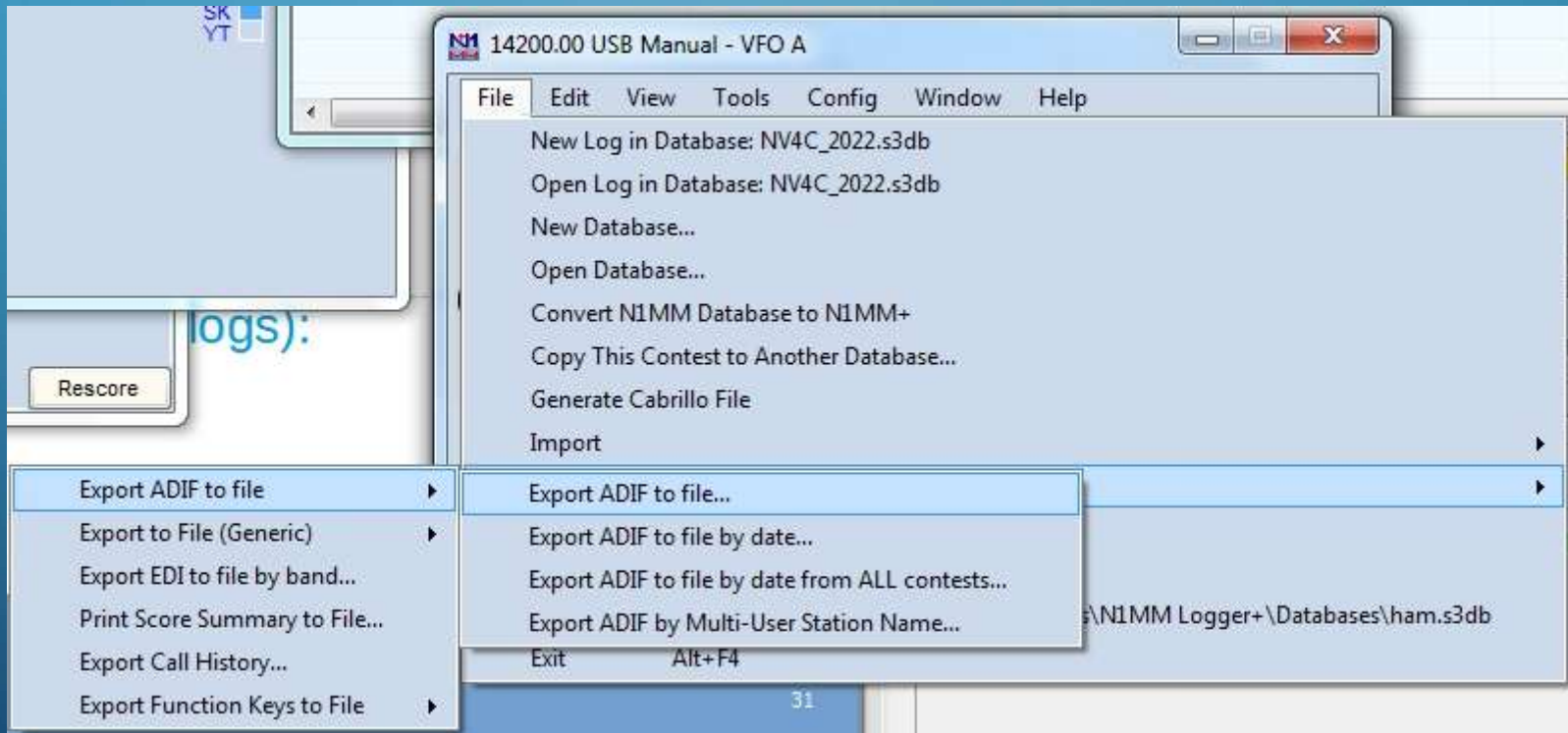
SUBMIT THE LOG

Export complete!

Send the log to the contest based on the contest requirements



SUBMIT THE LOG GENERATE ADIF FILE



SAVE THE ADIF FILE
SUBMIT THE LOG
IMPORT TO YOUR DAILY LOGGER AND
UPLOAD TO LOTW

